

0437.004

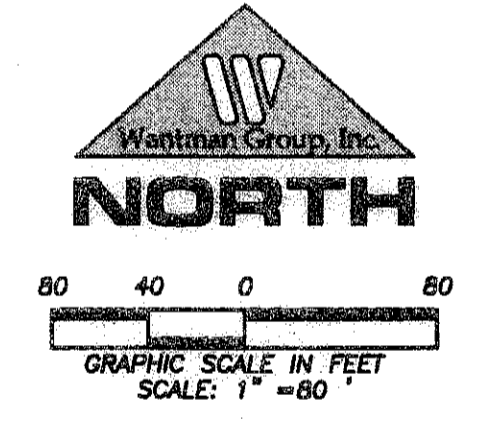
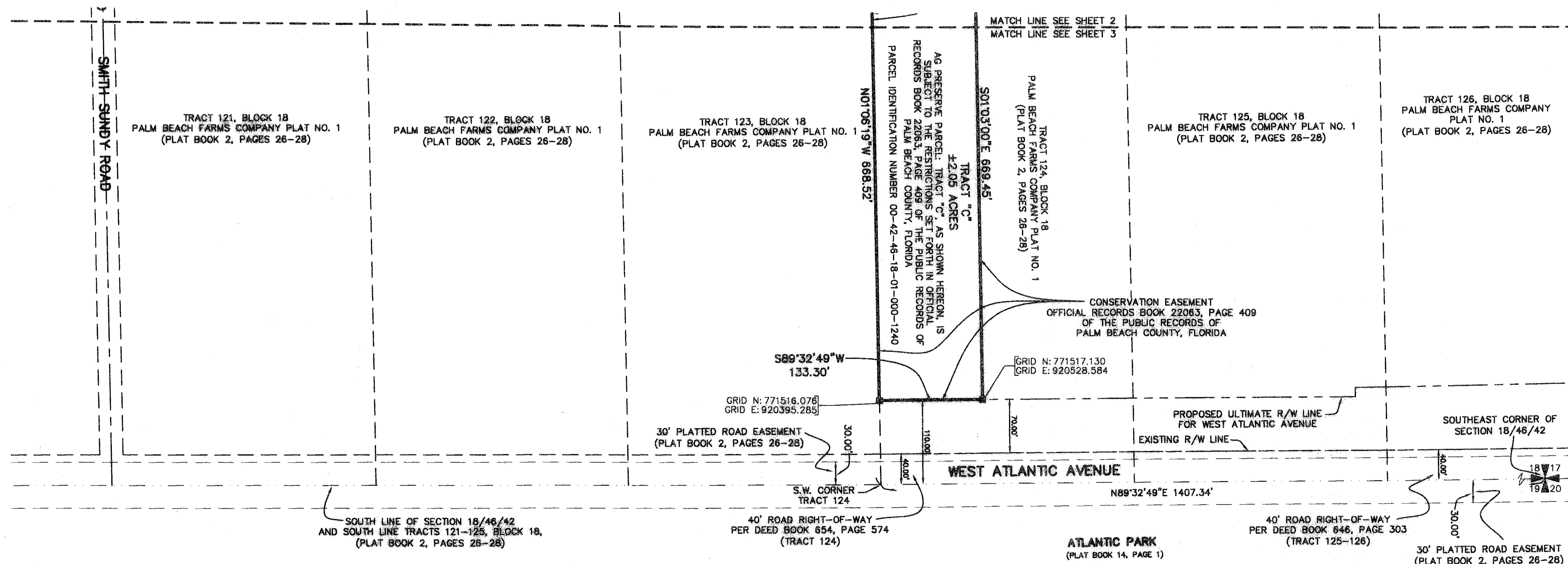
DELRAY MARKETPLACE PRESERVE 3

BEING A REPLAT OF A PORTION OF TRACTS 100, 104 AND 124, BLOCK 18, TOGETHER WITH TRACTS 101, 102, AND 103, BLOCK 18, PALM BEACH FARMS COMPANY PLAT NO. 1, ACCORDING TO THE PLAT THEREOF AS RECORDED IN PLAT BOOK 2, PAGES 26 THROUGH 28, OF THE PUBLIC RECORDS OF PALM BEACH COUNTY, FLORIDA SITUATED IN SECTION 18, TOWNSHIP 46 SOUTH, RANGE 42 EAST, PALM BEACH COUNTY, FLORIDA
JANUARY, 2008 SHEET 3 OF 3

CONTROL NO. 2004-616 (DELRAY MARKETPLACE)

97

STATE OF FLORIDA
COUNTY OF PALM BEACH
THIS PLAT WAS FILED FOR
RECORD AT _____ M.
THIS _____ DAY OF _____
A.D. 2008 AND DULY RECORDED
IN PLAT BOOK _____ ON
PAGES _____ THROUGH _____
SHARON R. BOCK
CLERK AND COMPTROLLER
BY: _____
DEPUTY CLERK



LEGEND:

- FP&L = FLORIDA POWER AND LIGHT
- LB = LICENSE BUSINESS
- LS = LICENSE SURVEY
- LWDD = LAKE WORTH DRAINAGE DISTRICT
- NO = NUMBER
- ORB = OFFICIAL RECORDS BOOK
- PB = PLAT BOOK
- PG = PAGE
- PGS = PAGES
- POB = POINT OF BEGINNING
- PRM = PERMANENT REFERENCE MONUMENT
- R/W = RIGHT-OF-WAY

Wantman Group, Inc.
Engineering ♦ Surveying ♦ Mapping
2035 VISTA PARKWAY, SUITE 100
WEST PALM BEACH, FL 33411
(561) 687-2220 phone (561) 687-1110 fax
CERT No. 6091 - LB No. 7055
THIS INSTRUMENT WAS PREPARED BY MARTIN J. SHATTO, P.S.M.
PROFESSIONAL SURVEYOR AND MAPPER, REGISTRATION NO. 5219
IN THE OFFICES OF WANTMAN GROUP, INC.